

MORGUE ASSISTANCE BY THE TRACE EVIDENCE ANALYST

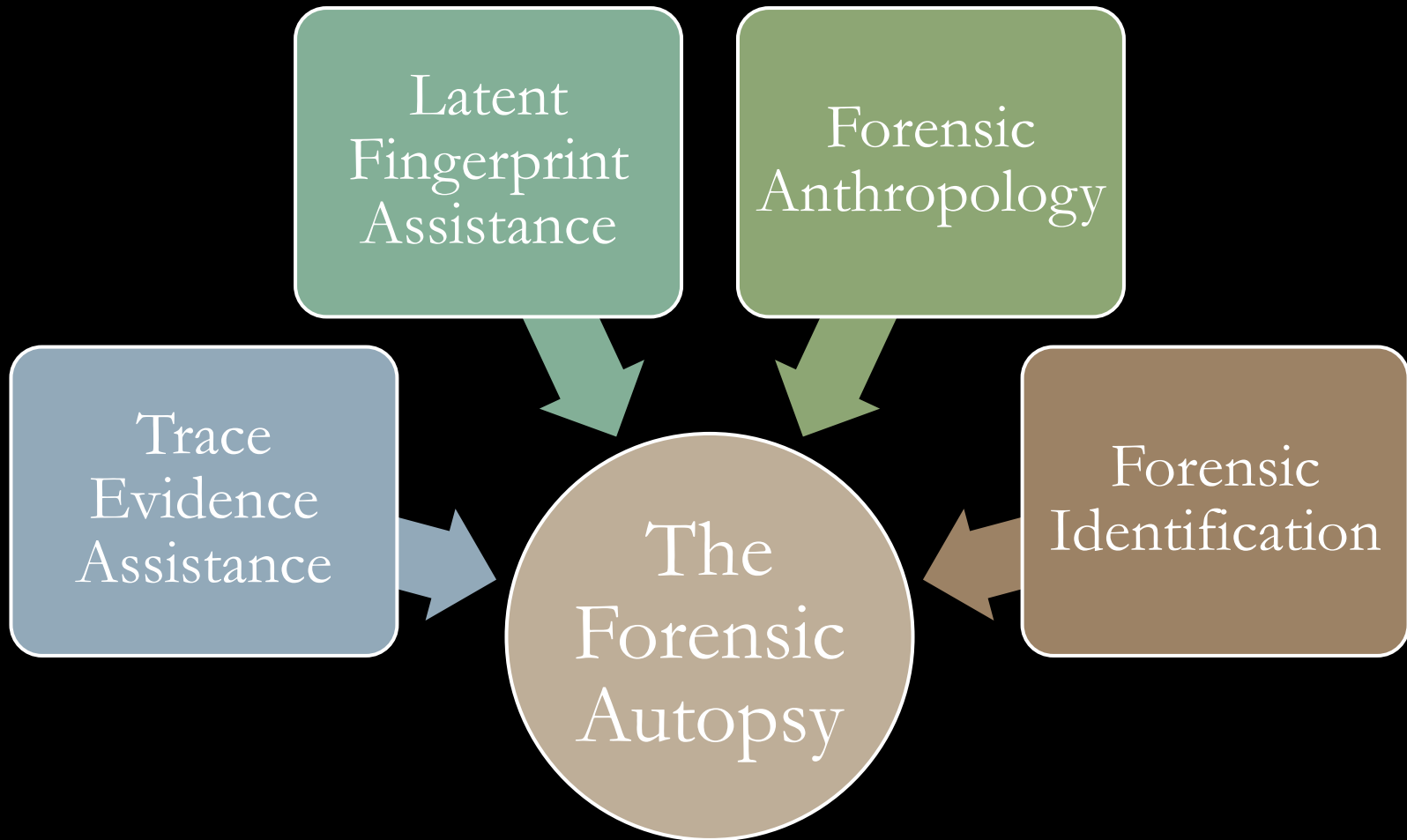


Patricia C. Eddings, M.S.

Kelly L. Belcher, M.S.

Tarrant County Office of the
Chief Medical Examiner and
Forensic Laboratories

WHAT DOES MORGUE ASSISTANCE ENCOMPASS?

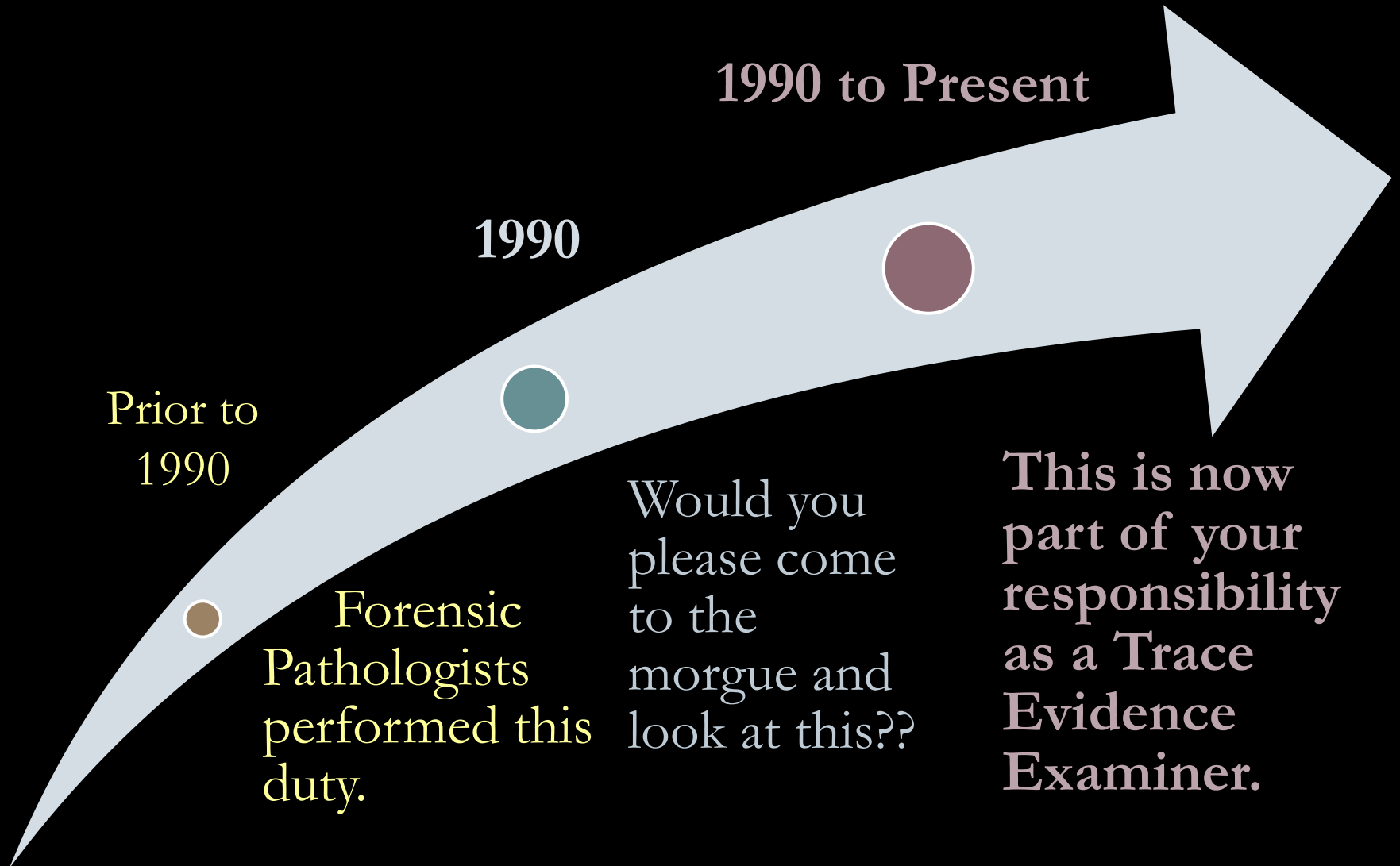


TRACE EVIDENCE ASSISTANCE



Edmond Locard at work.

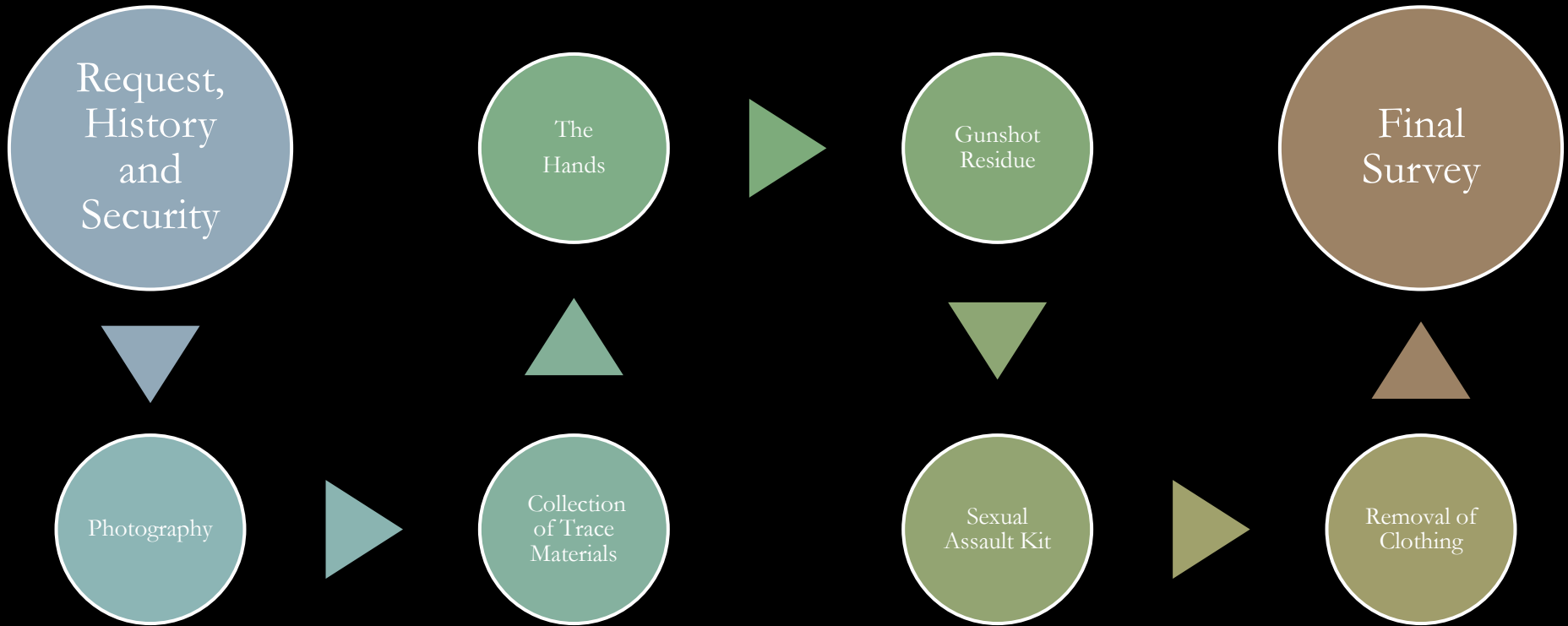
HISTORY OF THIS SERVICE AT THE TARRANT CO. MEDICAL EXAMINER'S OFFICE



**THE DECEASED BODY
AS A CRIME SCENE**



THE BODY SCENE

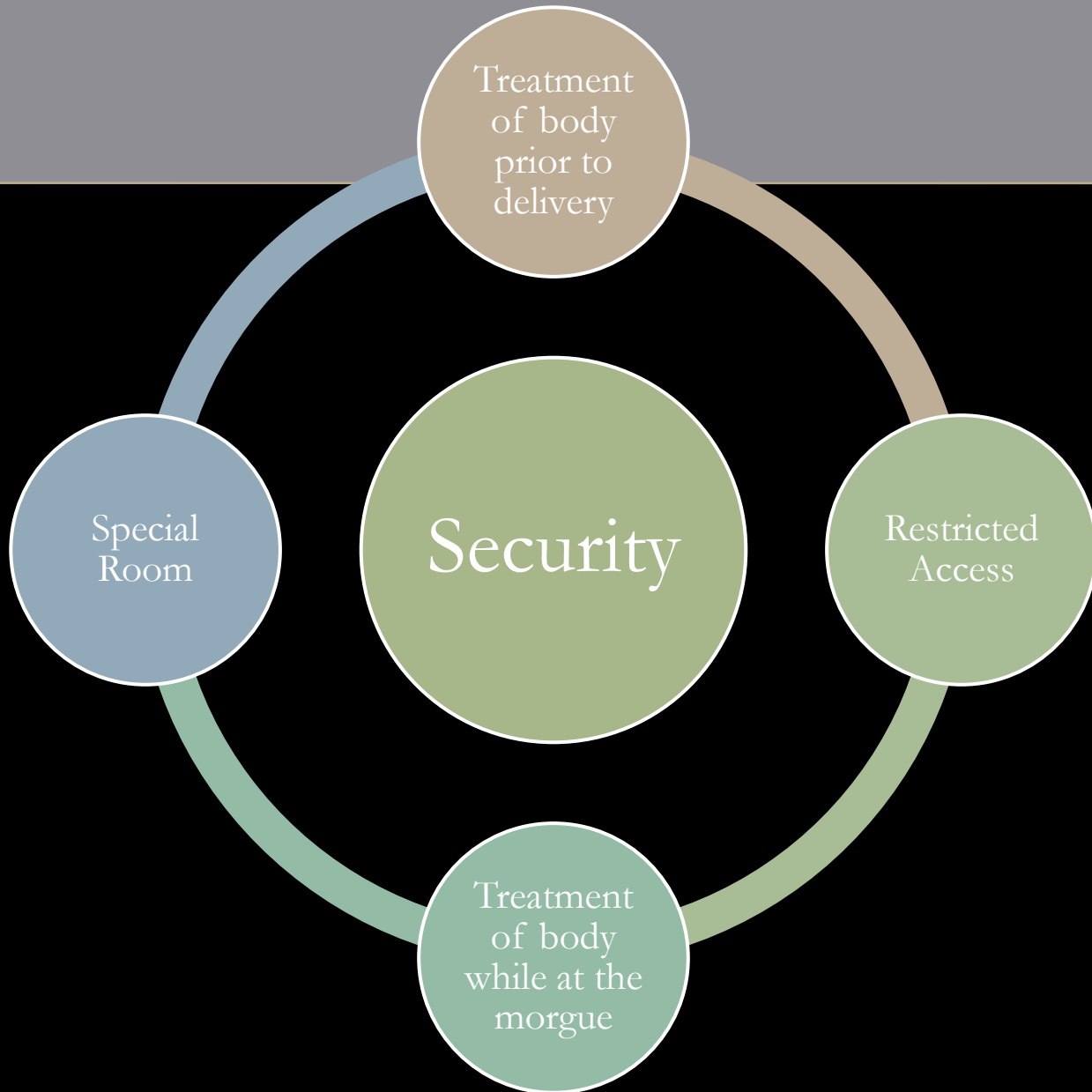


REQUEST, HISTORY AND SECURITY



DO NOT CROSS





PHOTOGRAPHY

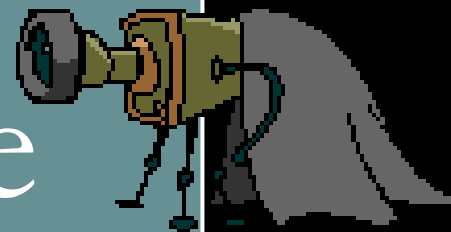




Overall

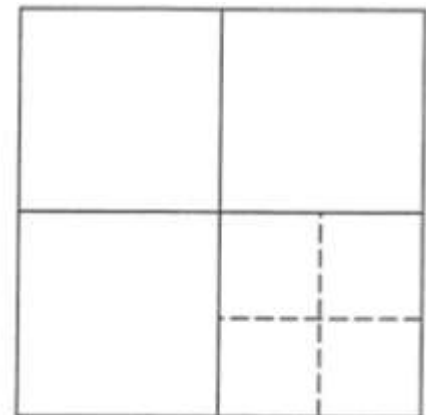
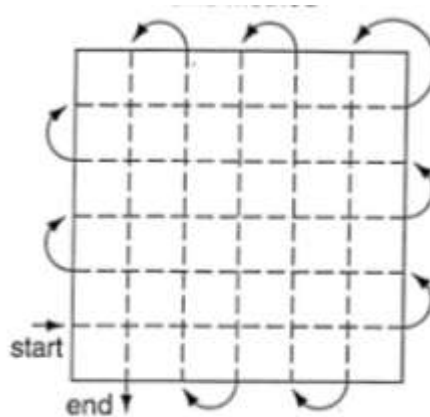
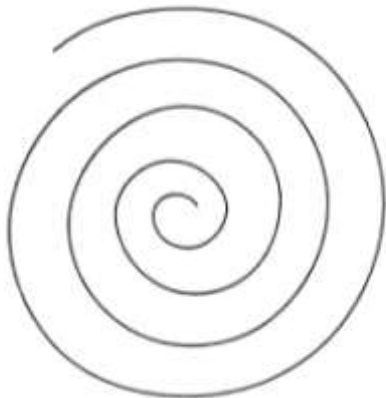


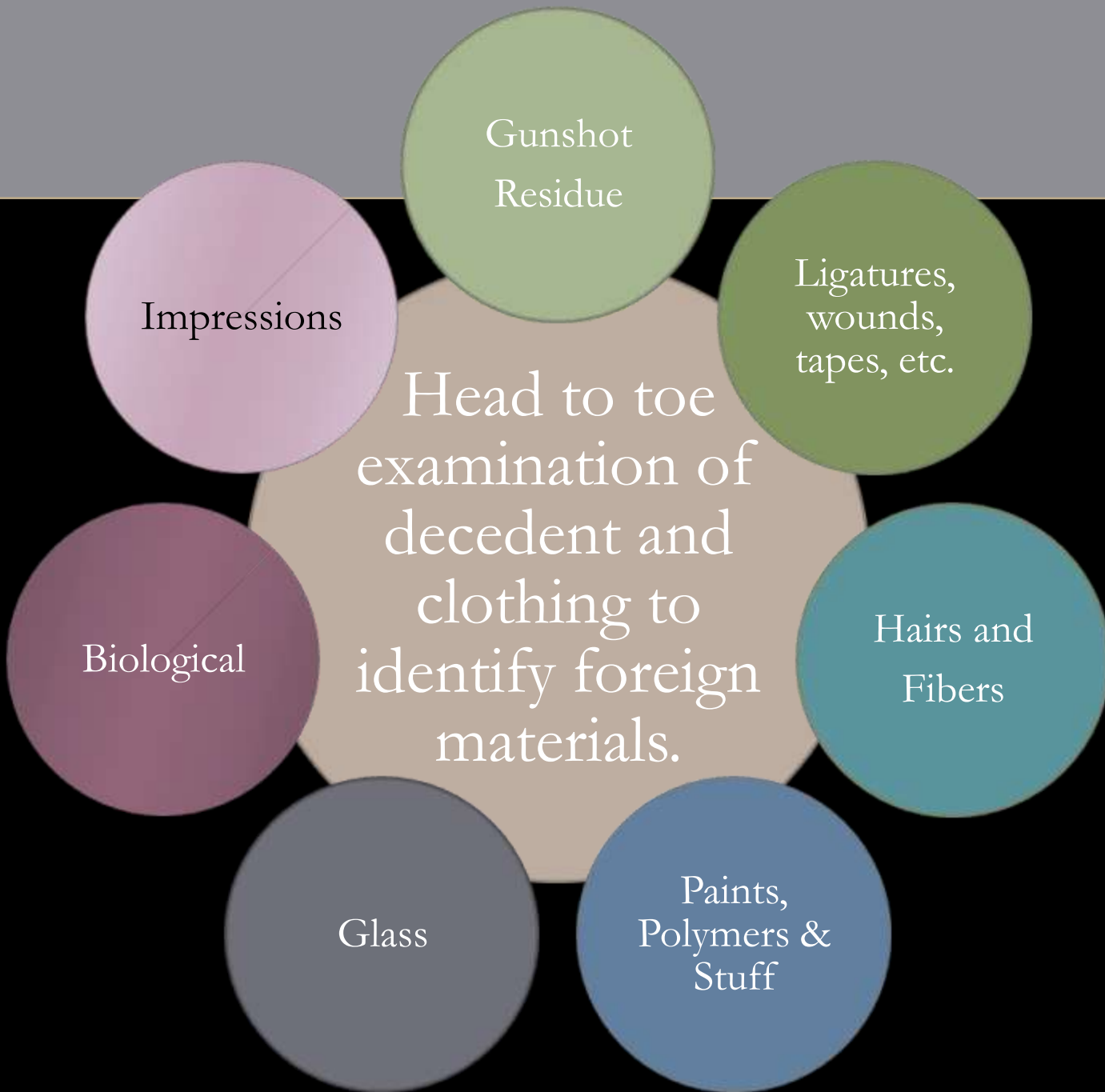
Midrange



Close-up

METHODICAL COLLECTION OF TRACE EVIDENCE





THE HANDS





**Particulates
and
Residues**



GSR



DNA

Tweezers – SEM Stubs – Sterile Swabs and Sterile Water

GUNSHOT RESIDUES





SEXUAL ASSAULT KIT



SEXUAL ASSAULT KIT

Swabs

Oral
Anal
Vaginal/Penile
Peri
Breasts
Other

Smears

Oral
Anal
Vaginal

Other

Pubic Hair
Combing

Fingernail
Cuttings

Known Hair
Standards (100)

SEXUAL ASSAULT KIT



REMOVAL OF CLOTHING



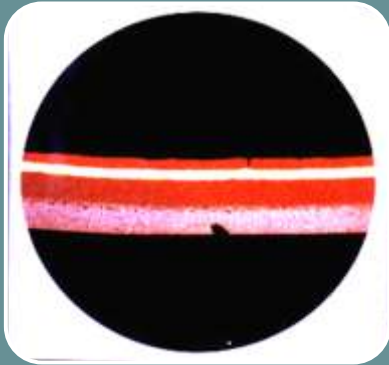






Firearms Related

- Distance Determinations



Trace Materials and DNA

- Hit and Run
- Homicides



Impressions

- Footwear/Tiretread/Tools
- Blood, Grease, Paint, Etc.

FINAL SURVEY



