

# **Glass Cuts in Clothing**

**Helen R. Griffin**

**Ventura County Sheriff's Department  
Forensic Sciences Laboratory**

# The Parts Of A Glass Case

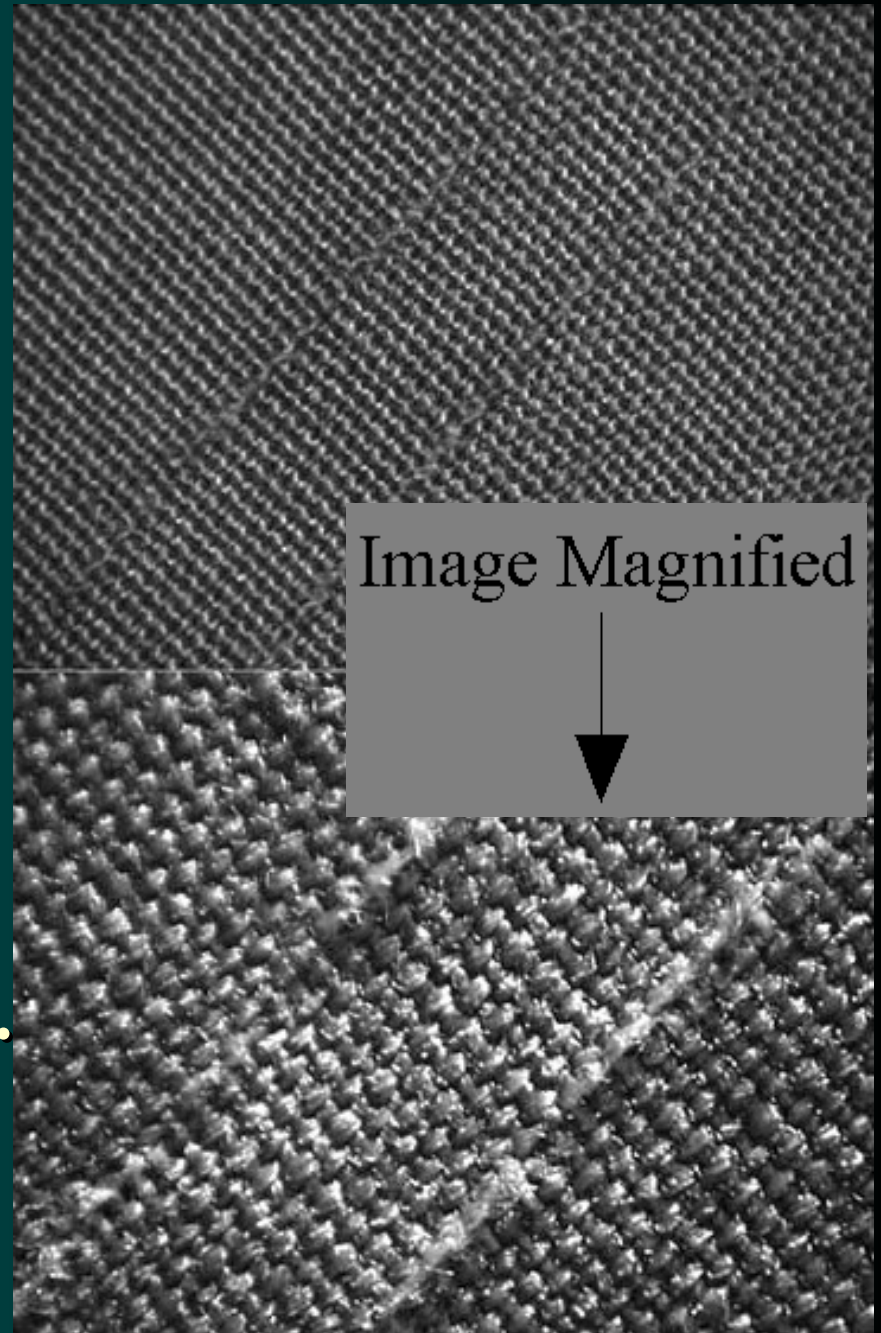
- Is there glass present?
- Is the location/quantity of forensic significance?
- Could the glass have originated from the control source?
- **Is there any other probative evidence?**

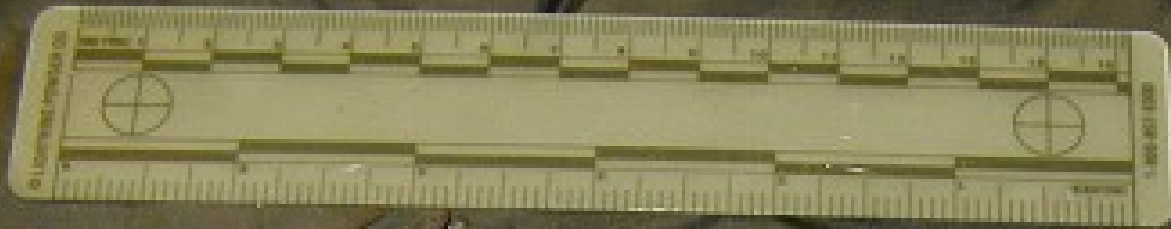
# Homicide

**Simulation of cuts observed  
in the suspect's jacket.**

**Cuts like these could not be  
duplicated using knives.**

**Note that the cuts are barely  
visible without magnification.**





**Robbery**



# Cuts To Exterior Fabric

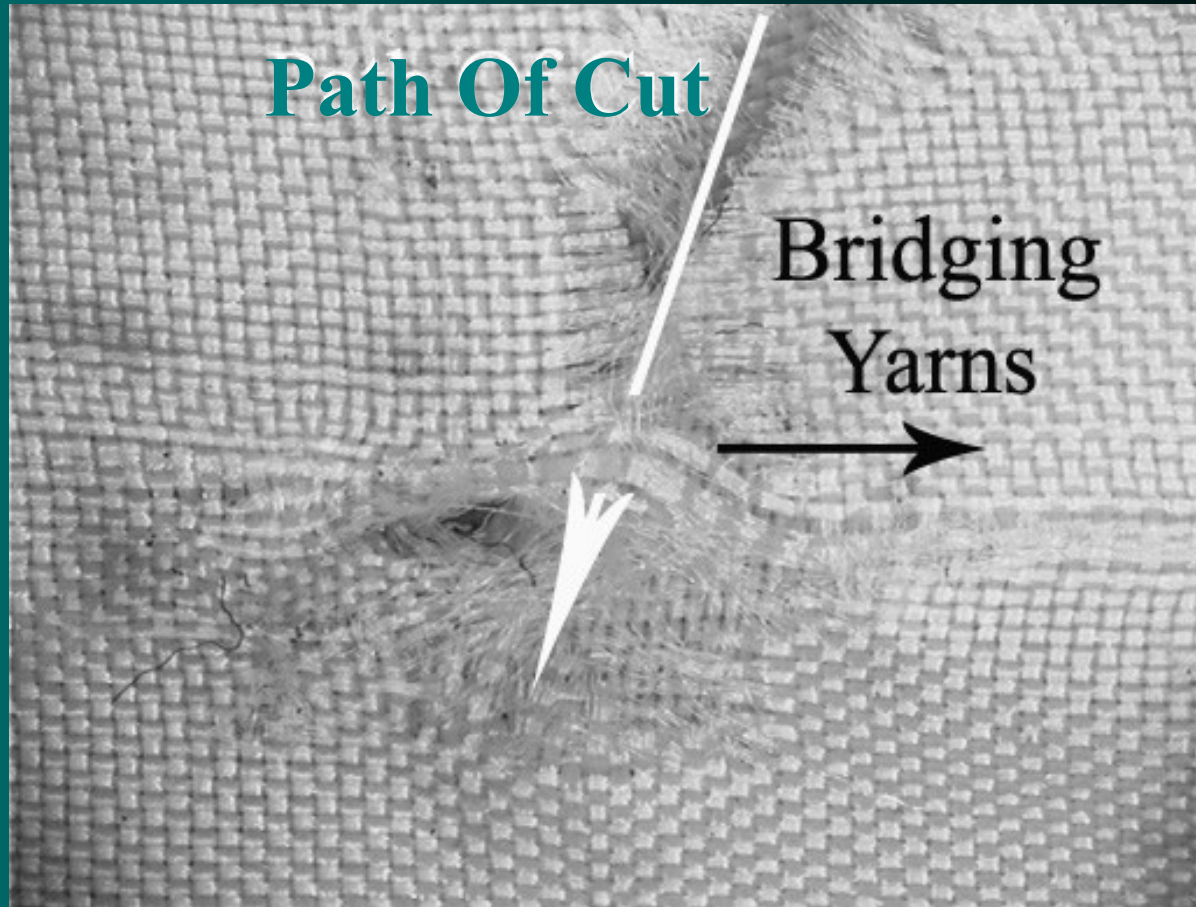


Sharp cuts and multiple directions.



Parallel and shallow cuts.

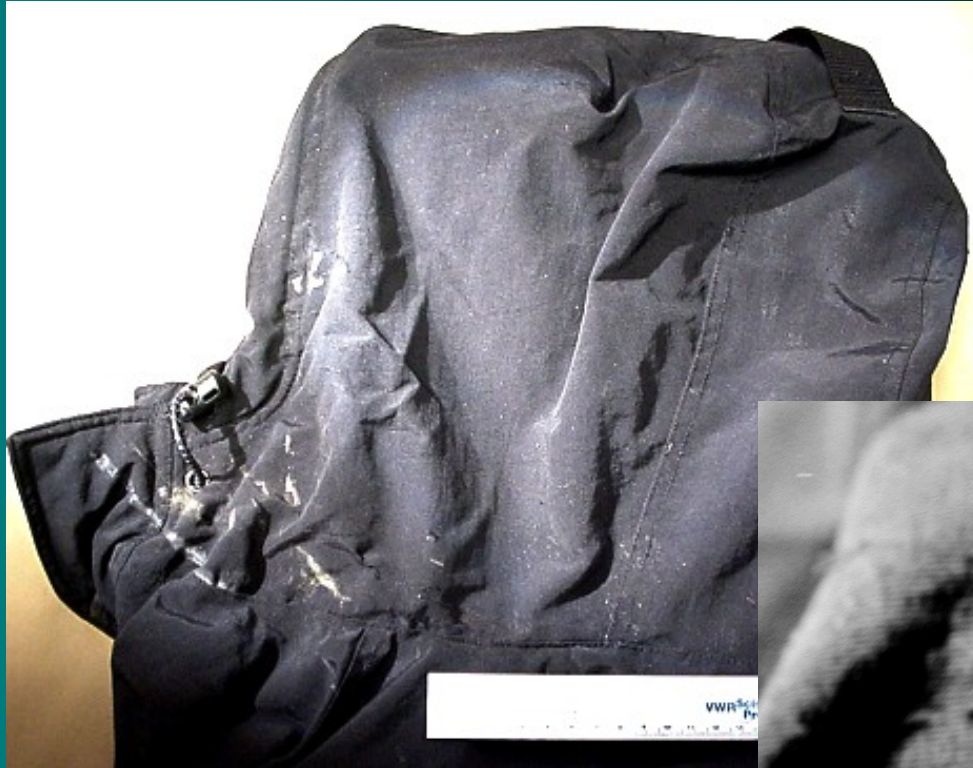
# Cuts In Lining - Bridging Yarns



# Glass From Between Outside Fabric And Lining

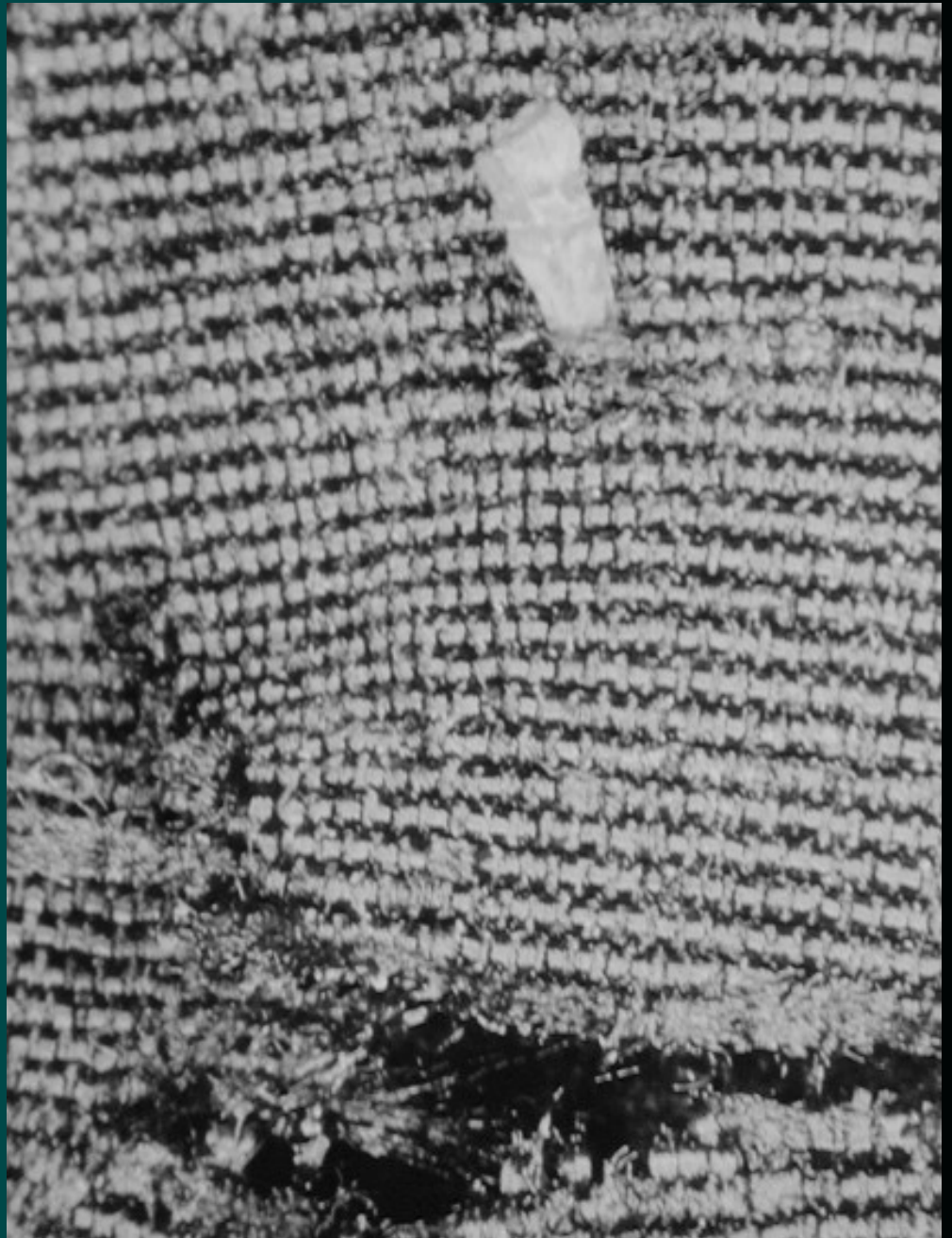


# Hit and Run Case

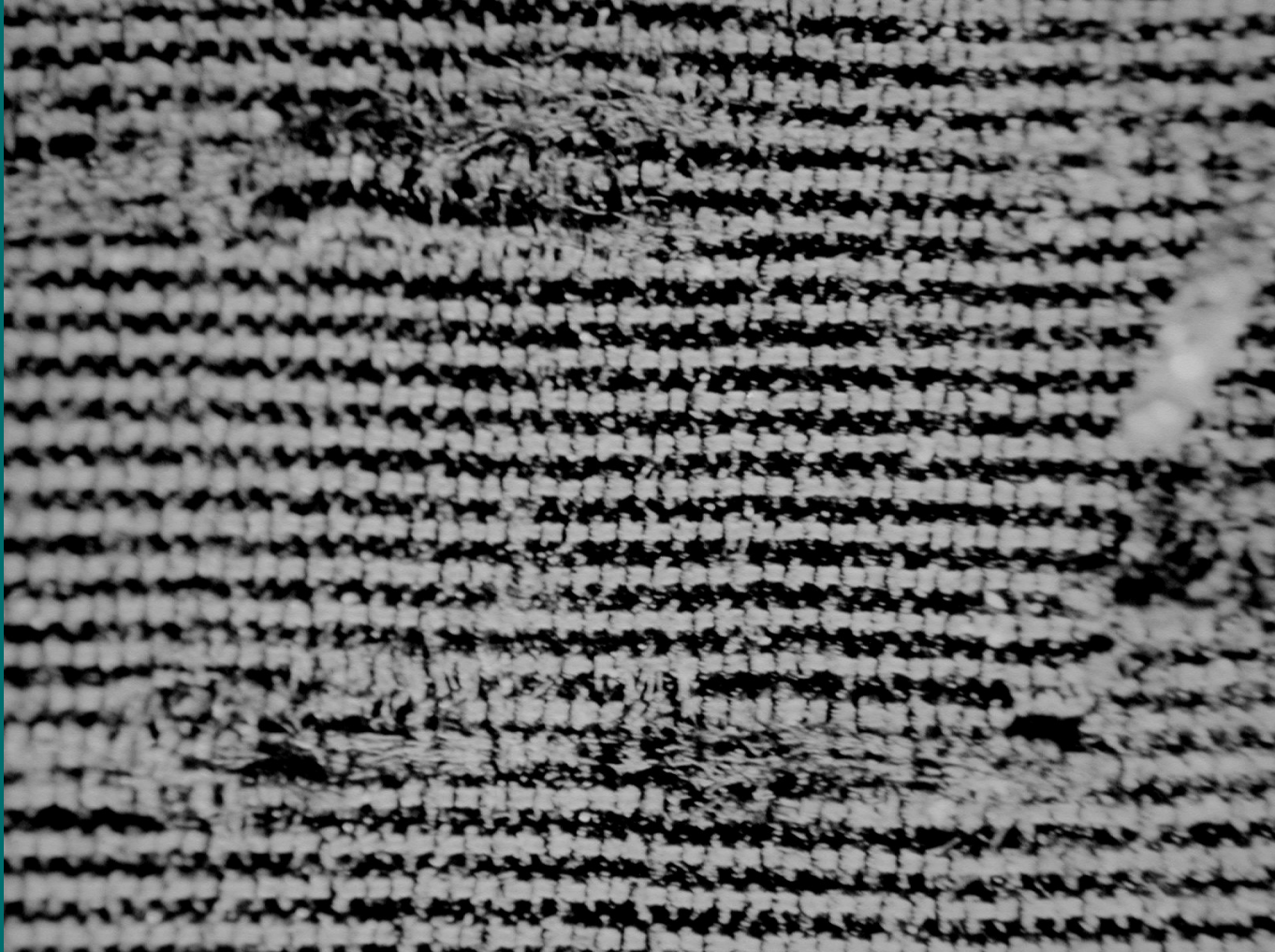




# Hit and Run Glass Shard



# Parallel & Shallow Cuts





**Breaking A Pane Of  
Glass**



**Weaves and Knits**

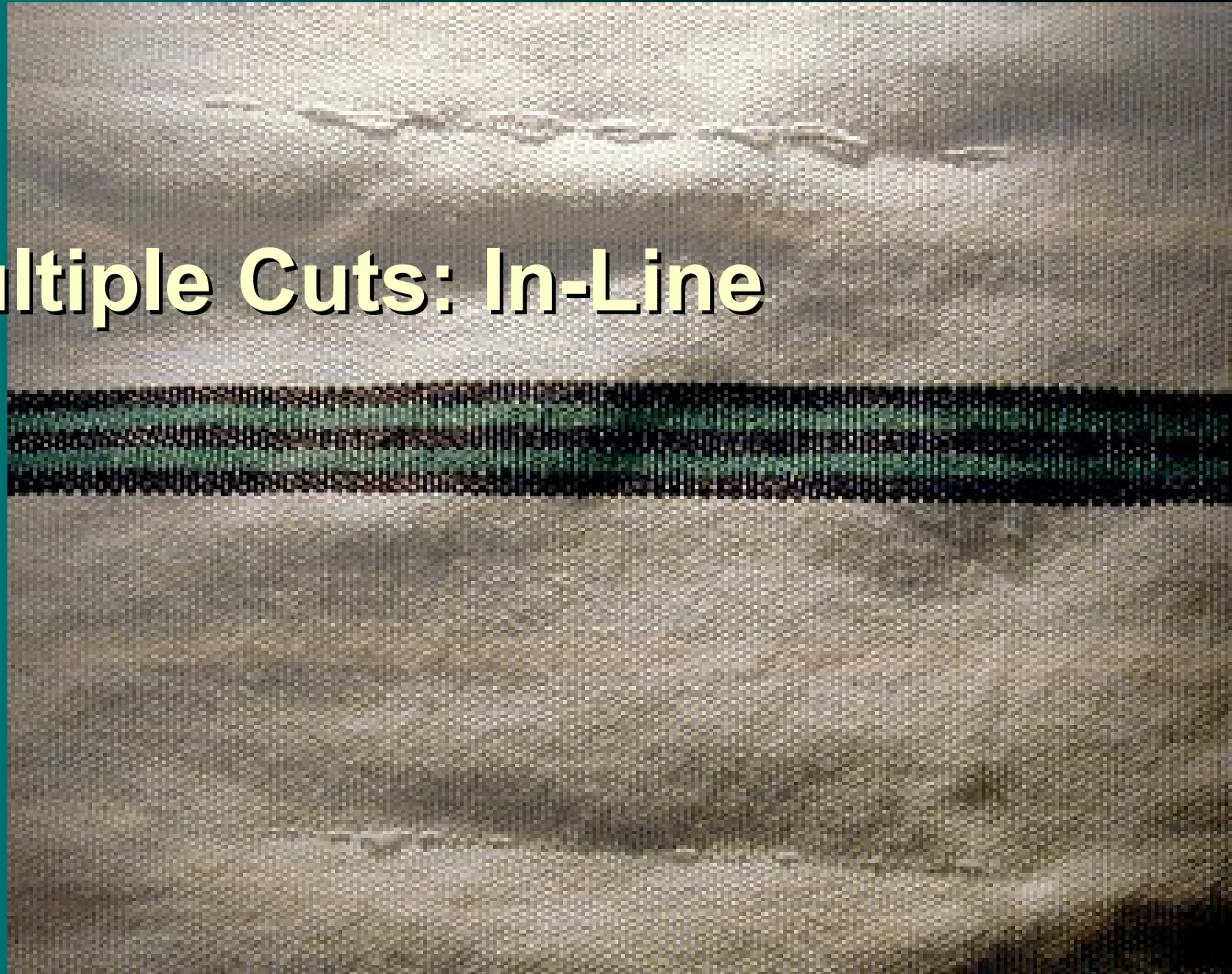
# Glass Blade

Blade After Cutting



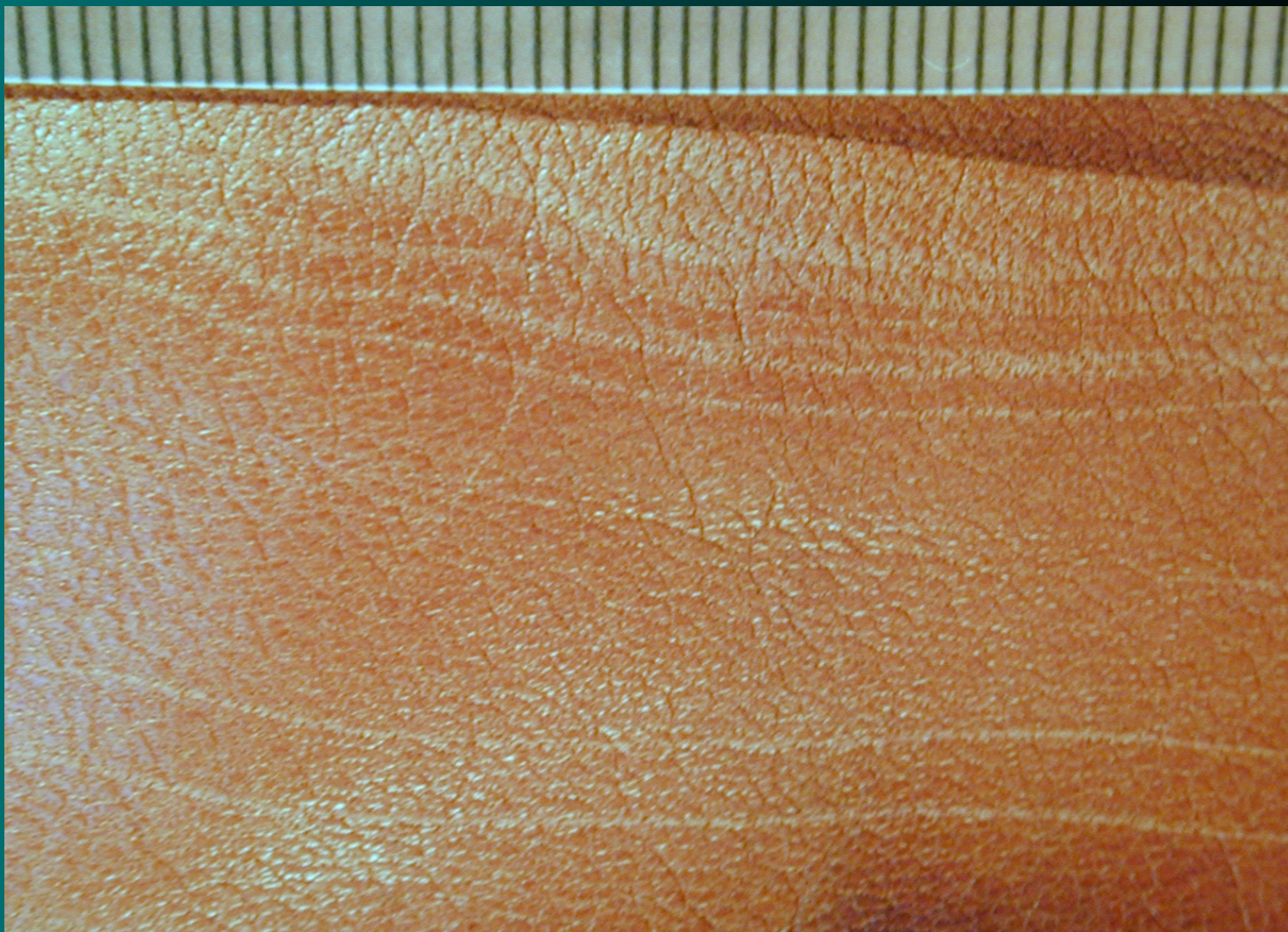
# Sharp Cuts





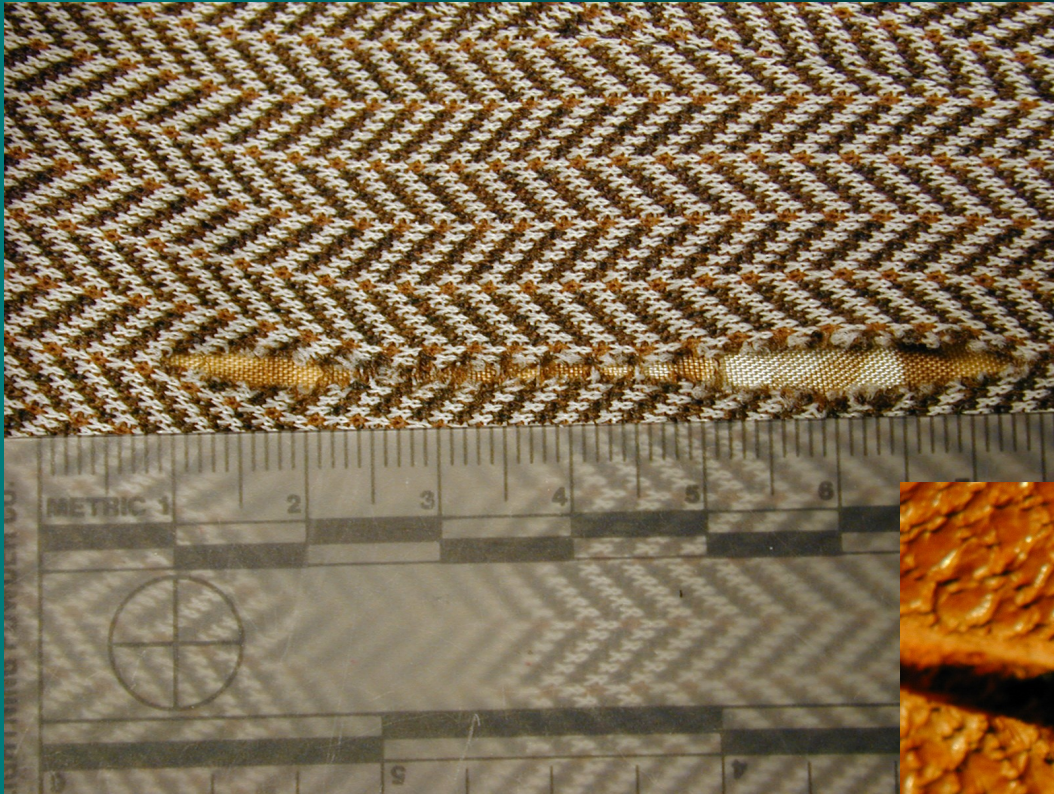
# Multiple Cuts: In-Line

# Parallel Cuts





# Shallow Cuts: Bridging Fibers



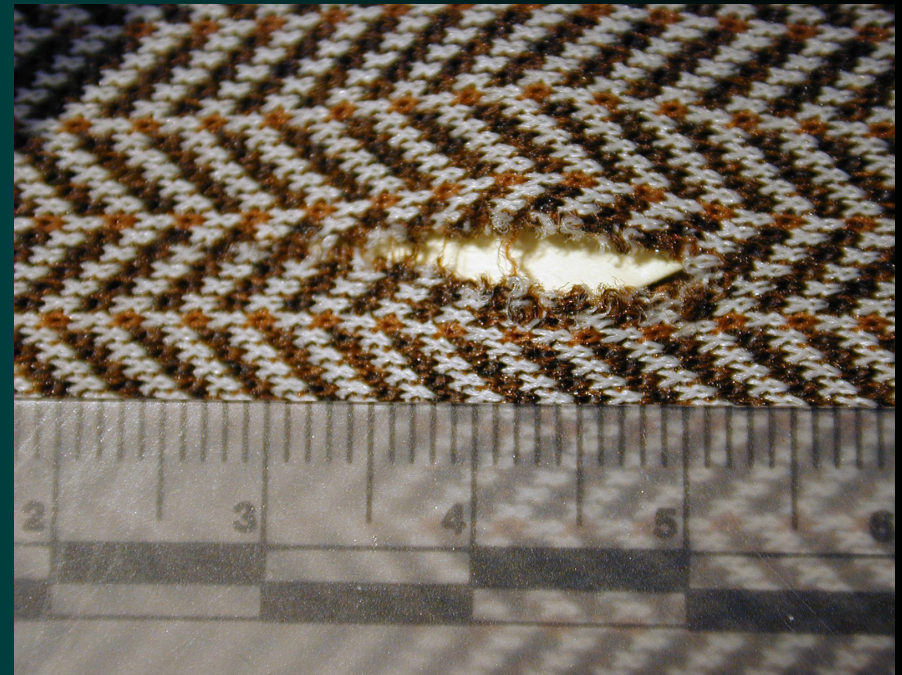
# Blue Jean Jacket

- Sharp cuts
- Multiple cuts: in-line
- Parallel cuts
- Shallow cuts



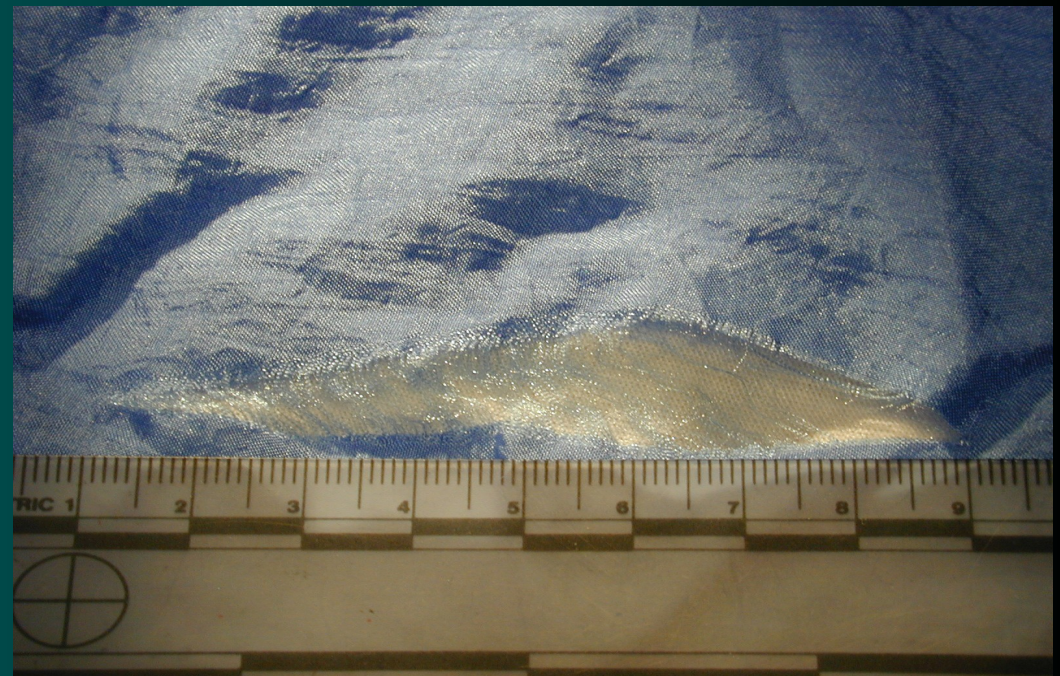
# Knit Dress Jacket

- Sharp cuts
- Multiple cuts: in-line
- Shallow cuts: bridging fibers



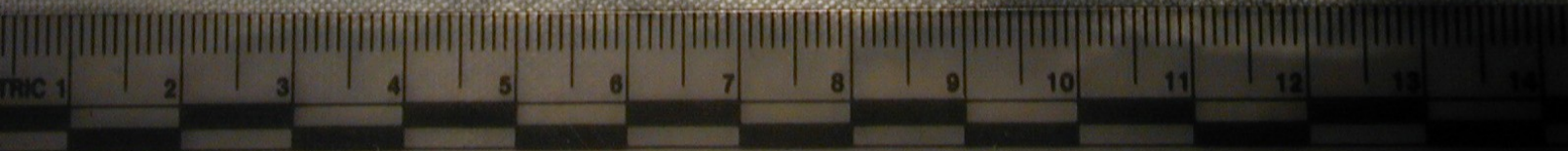
# Nylon Jogging Jacket

- Sharp cuts
- Multiple cuts: in-line
- Shallow cuts: bridging fibers



# Woven Shirt

- Sharp cuts
- Multiple cuts: in-line
- Parallel cuts
- Shallow cuts



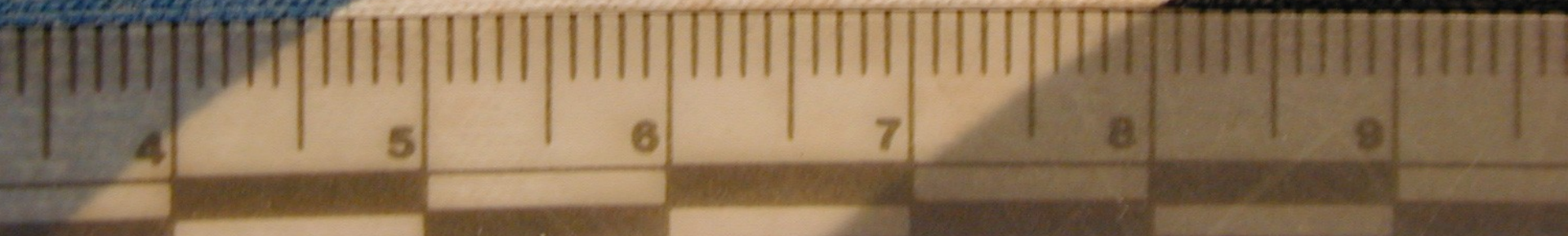
# Leather Jacket

- **Sharp cuts**
- **Multiple cuts: in-line**
- **Parallel cuts**
- **Shallow cuts: bridging fibers**



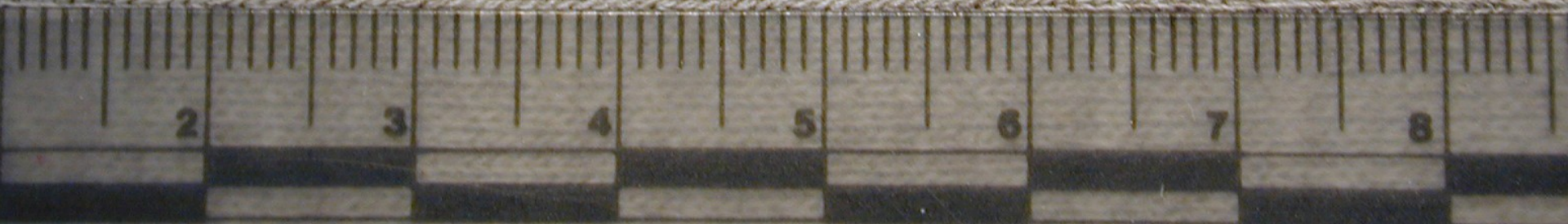
# Knit Shirt

- Sharp cuts
- Multiple cuts: in-line
- Shallow cuts: bridging fibers



# Sweatshirt

- Sharp cuts
- Multiple cuts: in-line
- Shallow cuts



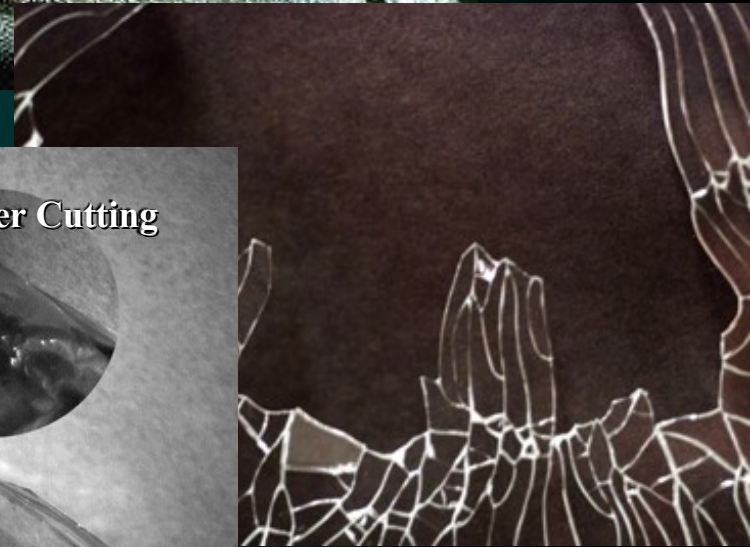




**Tears**

# Blade Characteristics

- Sharp
- Shallow
- Multiple blades



# Are Glass Cuts Probative?

Cuts in a car prowler suspect's jacket.



What type of blade do you think made these cuts?

# Acknowledgements

The author would like to thank the Washington State Patrol and Ventura County Sheriff's Department for providing the facilities and time to do this study.

Thanks to Val Copeland for assistance with the initial portion of this study.

Thanks to Geoff Bruton for editing.

# References

1. Taupin, J.M., Adolf F.P., and Robertson, J. Examination of damage to textiles, Forensic Examination of Fibers, Second Edition, J. Robertson, M. Grieve (Eds.), Taylor & Francis, London, 1999.
2. Monahan, D.L. and Harding, H.W.J. Damage to Clothing – Cuts and Tears. Journal of Forensic Sciences 1990; 35(4): 901-912.
3. Taupin, J.M. Testing conflicting scenarios – a role for simulation experiments in damage analysis of clothing. Journal of Forensic Sciences 1998; 43(4): 891-896.
4. Blackledge, R.D. Forensic Analysis on the Cutting Edge. Wiley-Interscience, 2007.

# Contact Information

**Helen Griffin**

**(805)654-3642**

**[helen.griffin@ventura.org](mailto:helen.griffin@ventura.org)**