

# MORGUE ASSISTANCE BY THE TRACE EVIDENCE ANALYST

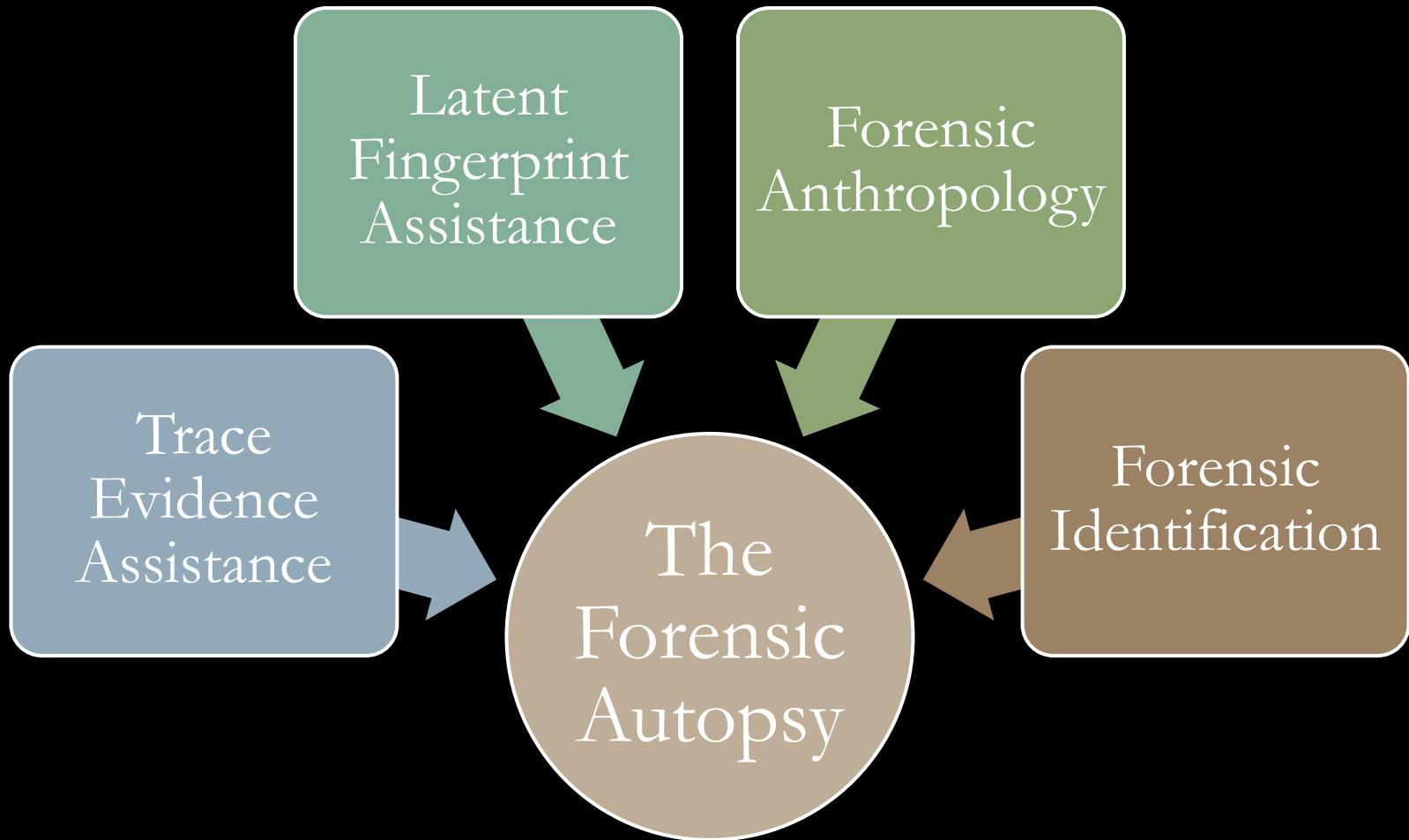


Patricia C. Eddings, M.S.

Kelly L. Belcher, M.S.

Tarrant County Office of the  
Chief Medical Examiner and  
Forensic Laboratories

# WHAT DOES MORGUE ASSISTANCE ENCOMPASS?

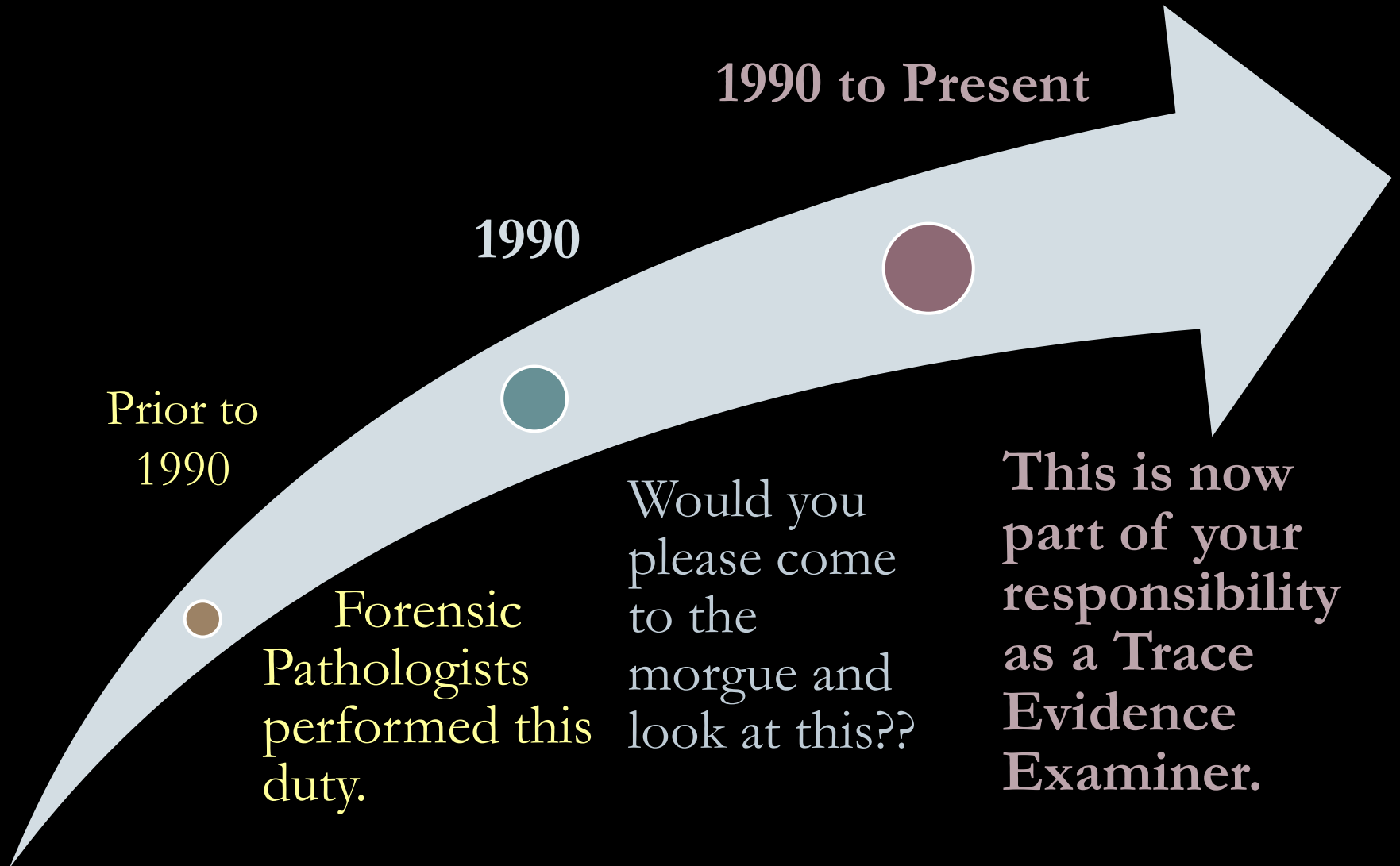


# TRACE EVIDENCE ASSISTANCE



*Edmond Locard at work.*

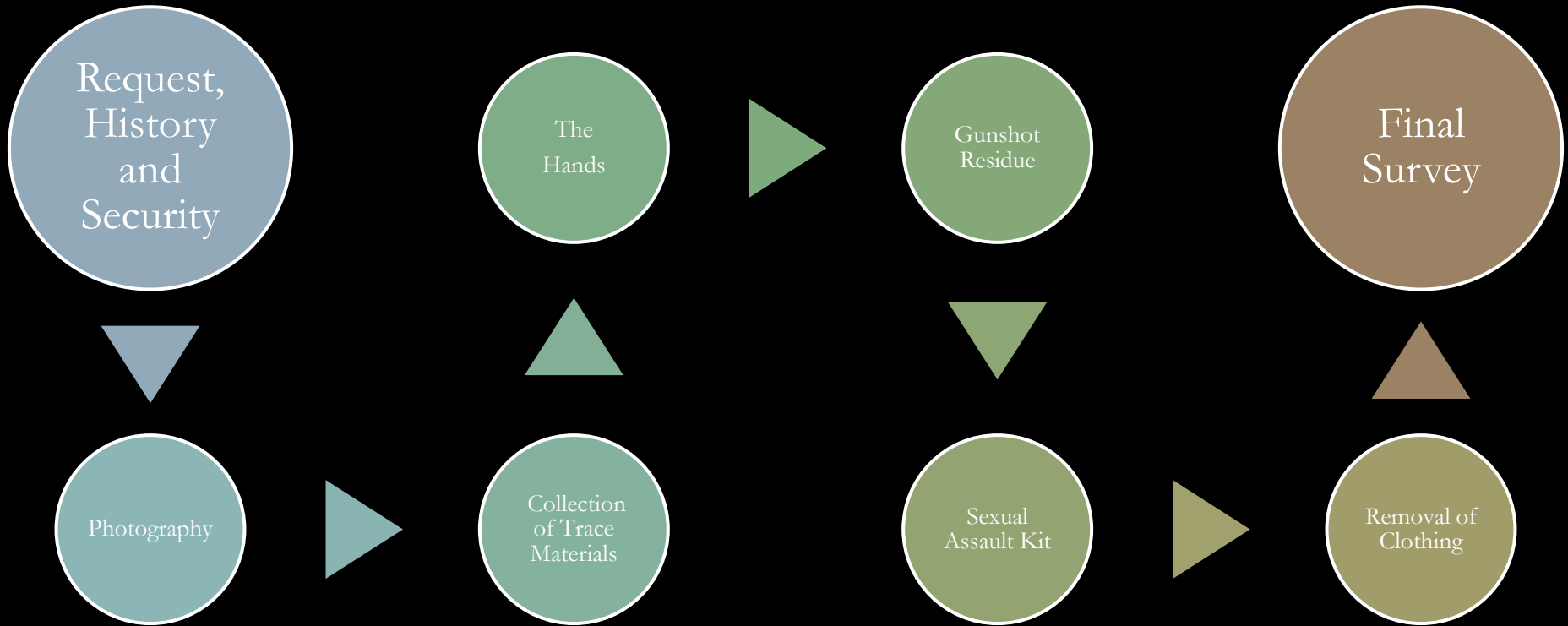
# HISTORY OF THIS SERVICE AT THE TARRANT CO. MEDICAL EXAMINER'S OFFICE



**THE DECEASED BODY  
AS A CRIME SCENE**



# THE BODY SCENE



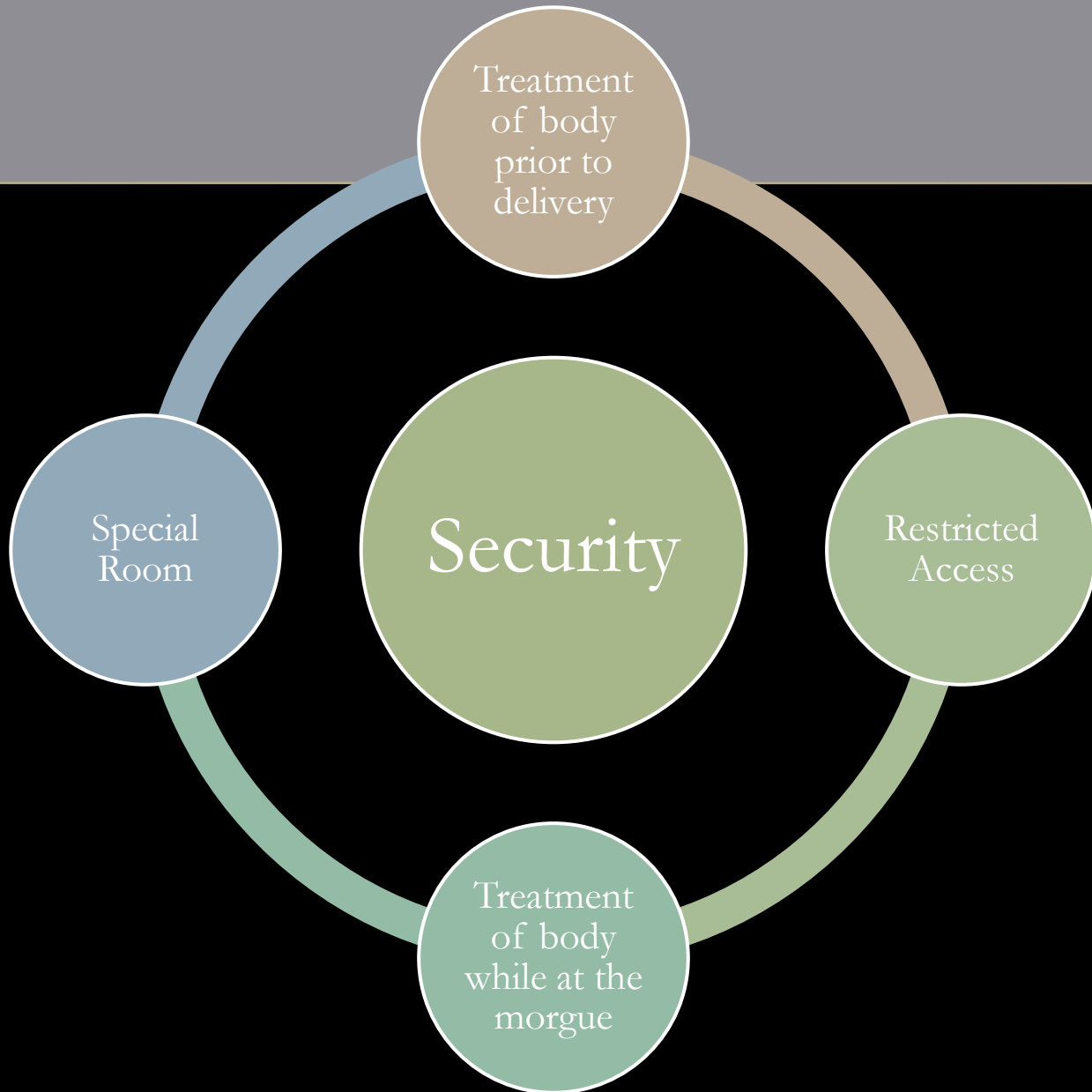
# REQUEST, HISTORY AND SECURITY



**DO NOT CROSS**







# PHOTOGRAPHY

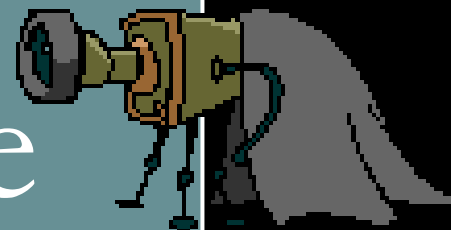




Overall

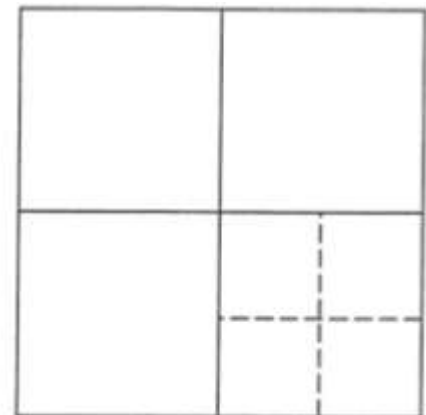
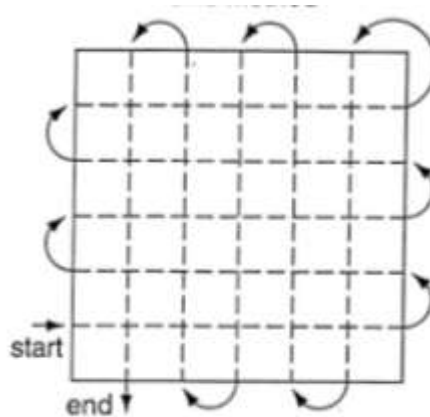
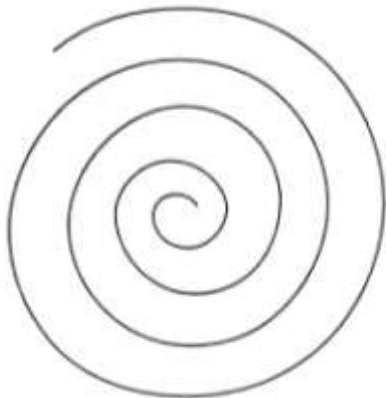


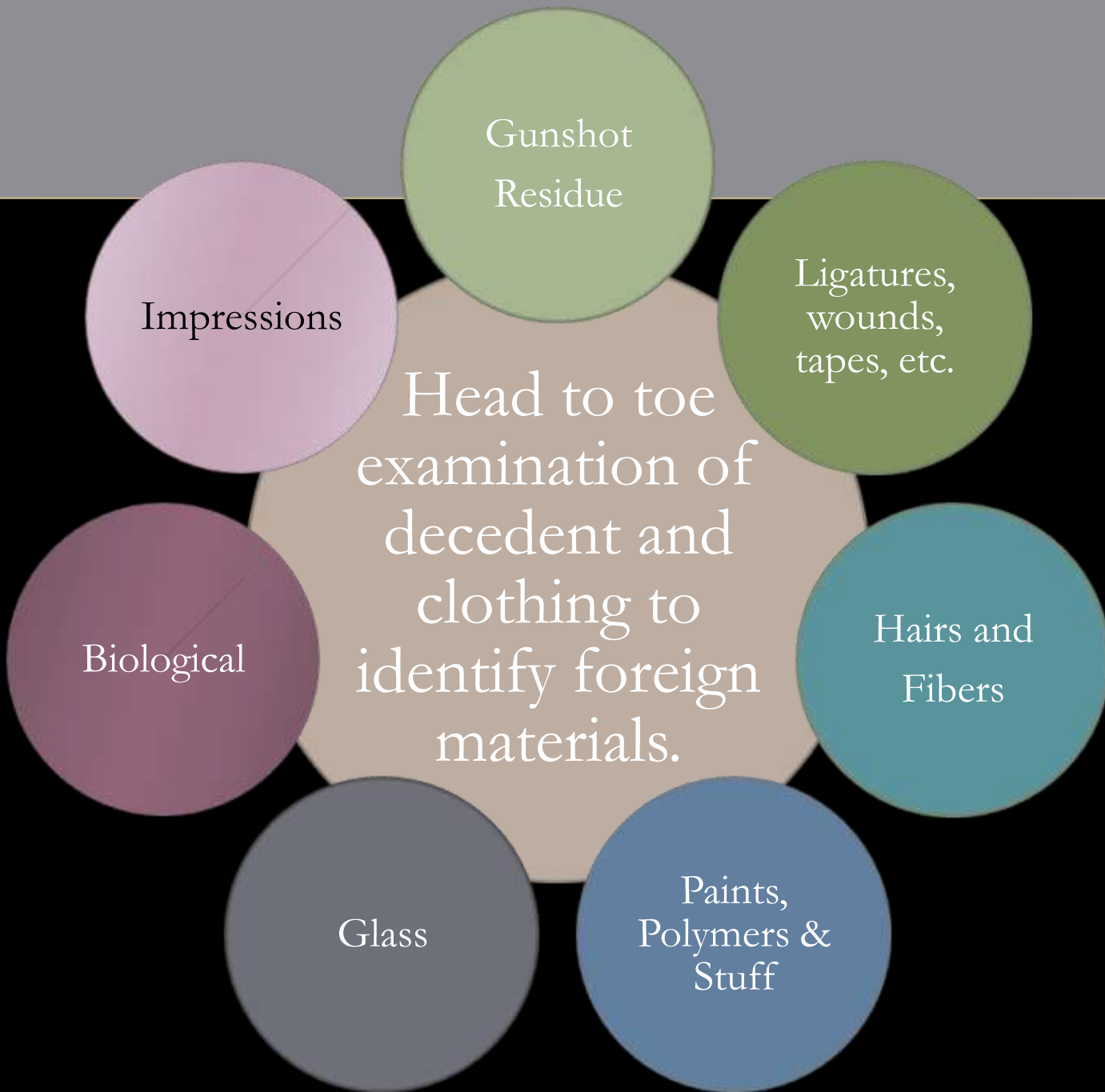
Midrange



Close-up

# METHODICAL COLLECTION OF TRACE EVIDENCE





# THE HANDS





**Particulates  
and  
Residues**



**GSR**



**DNA**

**Tweezers – SEM Stubs – Sterile Swabs and Sterile Water**

# GUNSHOT RESIDUES







# SEXUAL ASSAULT KIT



# SEXUAL ASSAULT KIT

Swabs

Oral  
Anal  
Vaginal/Penile  
Peri  
Breasts  
Other

Smears

Oral  
Anal  
Vaginal

Other

Pubic Hair  
Combing

Fingernail  
Cuttings

Known Hair  
Standards (100)

# SEXUAL ASSAULT KIT



# REMOVAL OF CLOTHING



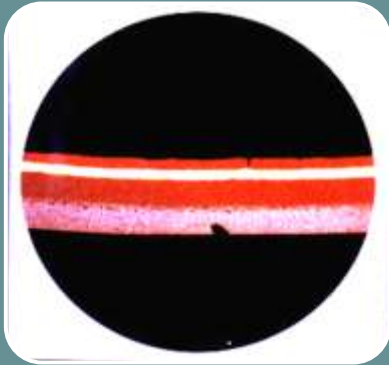






## Firearms Related

- Distance Determinations



## Trace Materials and DNA

- Hit and Run
- Homicides



## Impressions

- Footwear/Tiretread/Tools
- Blood, Grease, Paint, Etc.



# FINAL SURVEY



