



NSW Police Force
www.police.nsw.gov.au

A Holistic Approach to Textile Damage Examinations

Dr Susan Bennett

Chemical Criminalistics

Forensic Science Services Branch

Forensic Services Group

Trace Evidence Symposium 2009

A Holistic Approach to Textile Damage Examinations



NSW Police Force



Is textile damage a
biology discipline or a
trace evidence
discipline?

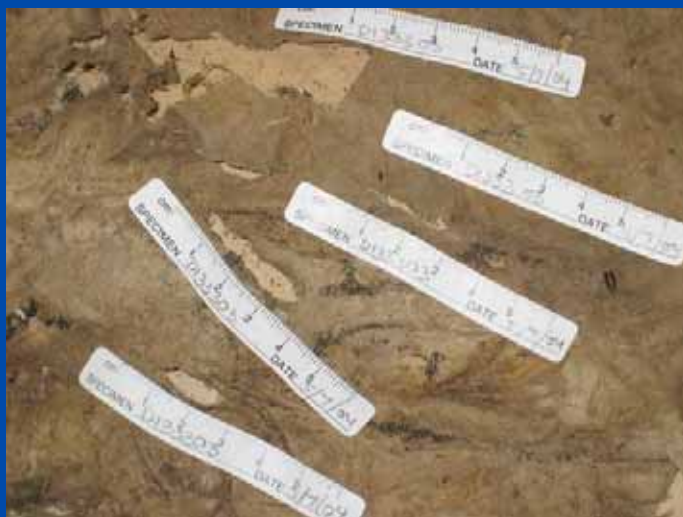


Case Study 1

- The remains of an elderly couple reported missing were discovered underneath the house they shared with their daughter.
- The father had died from blunt force trauma to his head.
- The cause of death of the mother could not be conclusively determined.



A Holistic Approach to Textile Damage Examinations



NSW Police Force

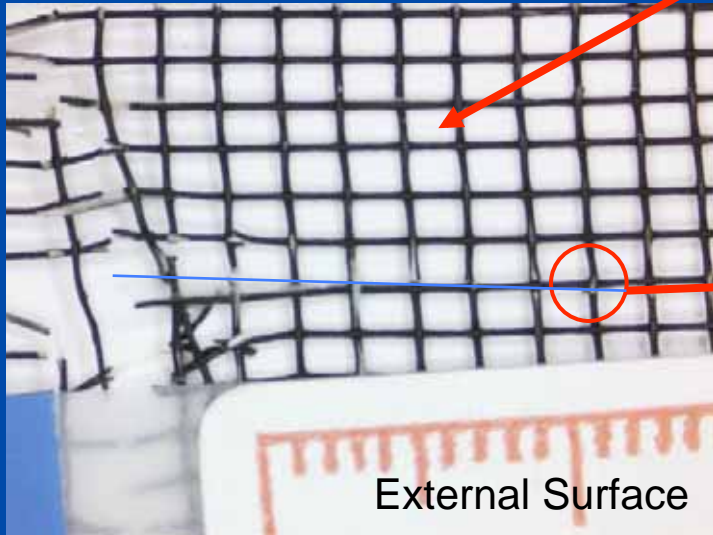
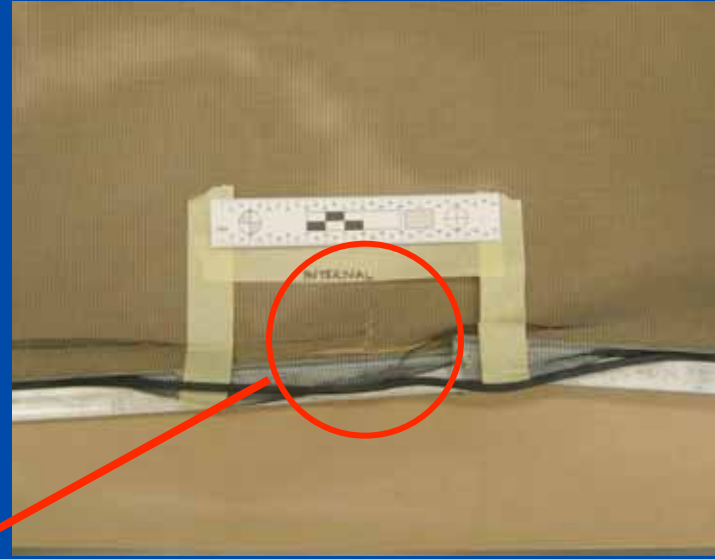
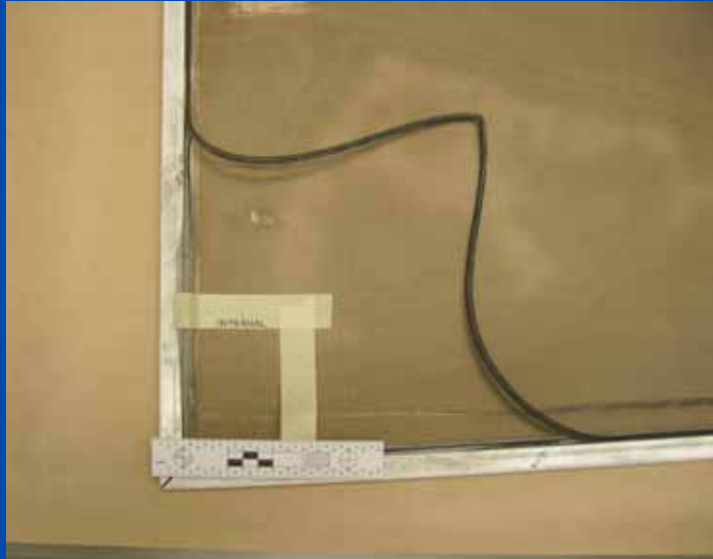


Case Study 2

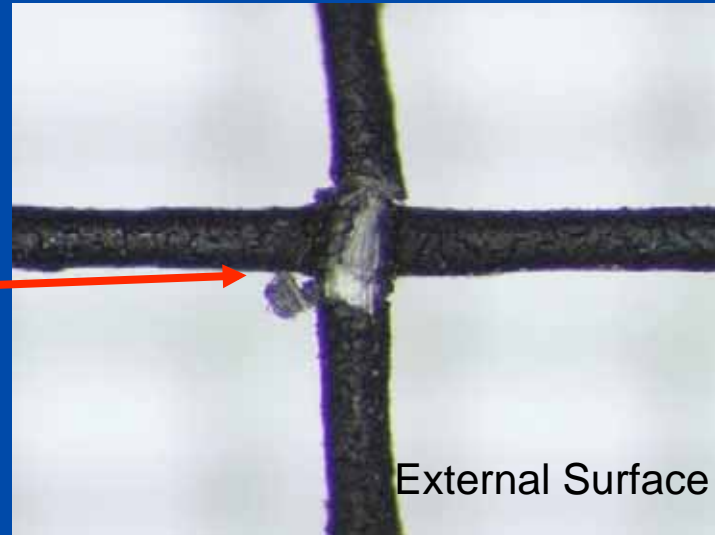
- A 2yr old girl went missing from the bedroom she shared with her 3 sisters.
- The window was open and the flyscreen had been cut on 3 sides at the bottom to create a flap.



A Holistic Approach to Textile Damage Examinations



External Surface



External Surface

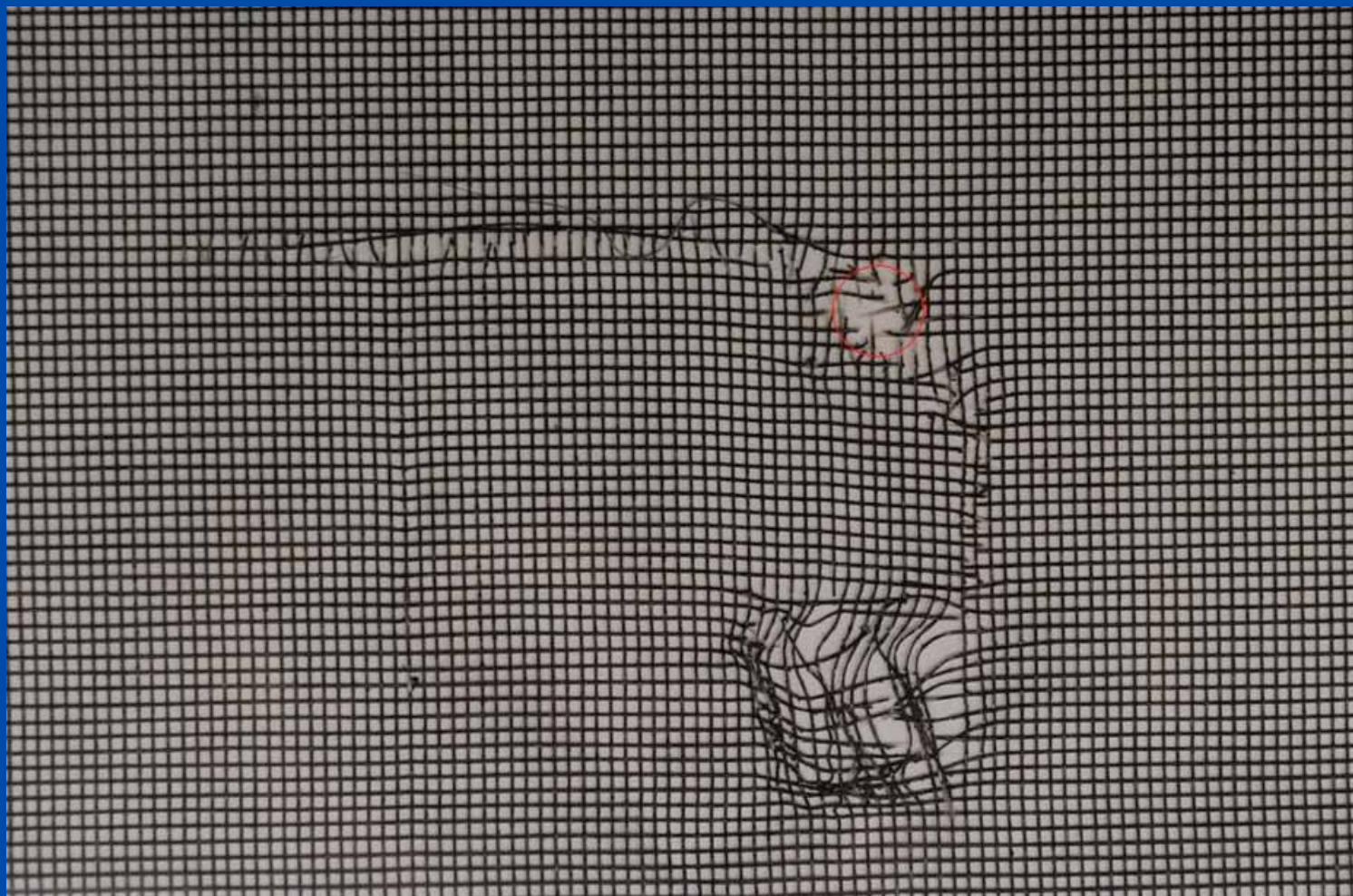


Case Study 3

- After an altercation with the suspect the victim ran inside the back door of his house.
- The suspect shot him through the security door.
- The suspect argued it was an accidental shooting.



A Holistic Approach to Textile Damage Examinations



NSW Police Force

Case Study 4 & 5

- Not all assaults involve biological evidence.
- Corrosive and flammable liquids can also be used.



A Holistic Approach to Textile Damage Examinations



NSW Police Force



Case Study 6

- The victim had been fatally stabbed.
- Crime scene found fibres on the knife blade.
- The knife was then sent for DNA.



A Holistic Approach to Textile Damage Examinations



NSW Police Force

A Holistic Approach to Textile Damage Examinations

What we are now doing:

- Textile damage sits under the fibres discipline in our Chemical Criminalistics team.
- Crime Scene and Biology staff are cross trained to assess cases and do a preliminary examination.



NSW Police Force

A Holistic Approach to Textile Damage Examinations



NSW Police Force





NSW Police Force
www.police.nsw.gov.au

